

Build or Expand your Business



**MACBRACEY
CORPORATION**

General Contractors

Welcome to MacBracey

MacBracey Corporation is a licensed General Contractor located in Washington, Pennsylvania. MacBracey Corporation has successfully completed projects in both the industrial and commercial construction sectors. MacBracey Corporation is a registered Women's Business Enterprise and Woman Owned Small Business.

MacBracey actively works in Pennsylvania, West Virginia, and Ohio. We have skilled superintendents and tradesmen who are continuously trained and can overcome any challenges they may face in the field.

Trinity Hall Exterior Renovation



Waste Treatment Corporation New Office Construction

Donley Brick Addition



At MacBracey, we are very interested in reaching out to growing businesses and creating a relationship that can help ensure long term success. In past years, we have done projects anywhere from \$1,000 to \$4,000,000: We aren't concerned with the size of the project, we are concerned with creating a bond that will bring us both success in the future.

We look forward to hearing from you in the future. We know that we offer some great services and can be an asset to your firm. If you have any questions about what we do or how we may be of assistance, please don't hesitate to call us.

M.S. Bracey, President



Mission Statement

MacBracey Corporation provides clients a construction process that begins with value based design, is completed through diligent communication and scheduling between project managers and superintendents, and is finally recognized by highly skilled tradesmen in the field. We pledge to establish long lasting relationships with clients by constantly exceeding expectation and gaining trust through our performance and the positive attitudes of every member of our team.



Patrick, Sam, Kelly, Roseanna, Peg, Nick, George, Dan, Scott & Michael

About the Team

MacBracey Corporation was founded in 2001 by Mary Sue “Sam” Bracey. Mary attended St. Mary’s College and received her Bachelor’s degree in Business Administration. In 1976 she then went on to receive her Masters of Business Administration from the University of Notre Dame. She completed the Star Builders’ school in 2016. Sam has almost 40 years of experience in the construction industry holding positions of project manager, project estimator, civil estimator, chief estimator, and now president.

Patrick Bracey graduated from Slippery Rock University in 2010 with a Bachelor’s Degree in Business Administration. In 2012, Patrick completed the Pennsylvania Builders’ Exchange’s estimating program. He completed the Star Builder’s School in 2016. Patrick has been working in the construction industry for over 10 years and has held positions as labor, carpenter, superintendent, project manager, and now vice-president.

Kelly Roddy graduated from Bradford School of Business in 2002 with an Associate’s Degree in Computer Programming. She graduated from Colorado Technical University in 2006 with a Bachelor’s Degree in Business Administration. Kelly has been working in the construction industry for over 15 years in administrative roles.

Nick Martin graduated from Slippery Rock University in 2012 with a Bachelor’s Degree in Business Administration. In 2017, he completed the Star Builder’s School. Nick has worked in the construction industry for the last 9 years and has held positions as laborer, account manager, project manager, and estimator.

George Bracey completed an accredited electrical course from Pennsylvania Commercial Technical School, has OQ certification for gas line installations, is a journeyman plumber, and he also has his Class-A Commercial Driver’s License. George has worked in the construction industry for over 10 years and has held almost every position and currently supervises excavation projects, plumbing projects, and all machinery maintenance.

Project Superintendents: Michael McAdams, Dan McAnallen, and Scott McAnallen. Our superintendents have all had experience and training in the construction industry and play a important role in delivering a successful project.



MacBracey Advantages

Due to our comparative size, clients receive very personal service from MacBracey. The client is never disconnected from the project. MacBracey is a local firm and because of this contact and communication with our clients occur on a regular basis. We understand that owners have concerns and questions, and we welcome them anytime. We want to develop great relationships and will always work to fit your schedule.

MacBracey has also created excellent relationships with many suppliers. Our suppliers are very professional and are always striving to lead their industry in pricing, delivery time, and product quality. We have relationships with dedicated sales representatives from a vast number of suppliers and we will use this to our client's advantage by being able to offer many different product options (color, size, brand, and design) at a very reliable price.


Subcontractor relationships have been a huge asset and have been a reason for our sustained growth over the past 10 years. We have a large database of subcontractors that we utilize to make sure there is no service that cannot be provided and professionally performed. These subcontractors are rated on past performances and these ratings can be utilized when awarding contracts for future projects. Our positive relationship with subcontractors creates a progressive job site where we can all work together to guarantee the projects run smoothly.

At MacBracey, we are constantly trying to incorporate the latest technology to streamline the construction process. This may mean new software that flows from estimating through project management to the site superintendent. It also may be seen in the field with more efficient tools/machines and/or employee training. We believe staying on the cutting edge of construction technology is a competitive advantage.

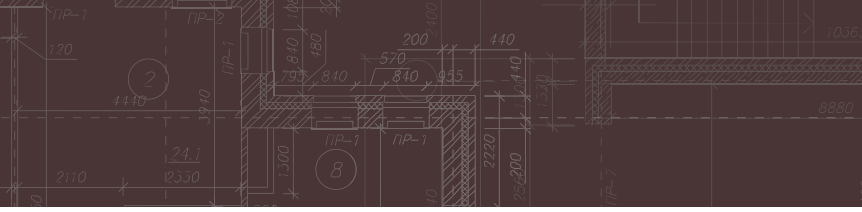
MacBracey has many years of experience in both the office and the field areas of the construction industry. When you work with MacBracey, you are working with a very professional firm that is fully insured and bondable. MacBracey prides itself on never cutting corners and will guarantee the project is completed correctly, safely, and always to the client's satisfaction. Our Company has gained an excellent reputation in the circle of clients we have worked for. We hope to grow and continue to impress any firm that may give us the pleasure to work with them.



Pre-Engineered Building Addition



Civil Construction



Civil Construction



Services Offered

MacBracey has the ability to assist you through every potential phase of a construction project. MacBracey can be hired as a consultant or project manager. This may be helpful at the beginning of a project when a client isn't sure which type of construction they need or how to begin the process. We will work with the client to provide an action plan that can see the project to the next step. This may mean preparing an analysis to determine which type of construction is advantageous, for both service and value, and if the building type is permitted at location as well as preparing construction estimates to ensure the project fits within the client's budget.

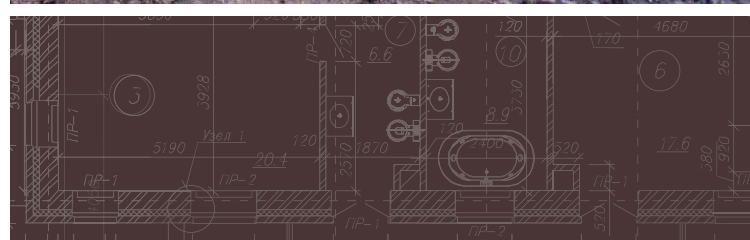
MacBracey can be hired to complete the civil design work as well as the building design work. This involves completing drawings and specifications that will allow the client to obtain required permits to begin construction. MacBracey's advantage throughout this phase is that we can ensure the project is designed efficiently for construction. Throughout this process we can really step in and leave our mark. We ensure the correct products are being installed and often change layouts to help lower future construction costs or the potential for problems. Having an experienced general contractor head up the design team means less surprises when construction takes place, and the client will see the savings throughout the construction phase of the project.

MacBracey can also be hired for the construction phase of your project. MacBracey has worked on many projects that were designed by third parties, and we have experience with many architects and engineers in the region. MacBracey develops project schedules using the critical path method so all involved can work together and keep projects on schedule. MacBracey's communication throughout the construction process ensures everyone receives up to date changes so information doesn't slip through the cracks. We will ensure the project gets done in a professional manner and is completed on schedule.

We would love to be involved in any phase of your company's next construction project.



Foundation Construction



Education & Community Projects

Education

MacBracey Corporation has extensive experience completing educational institution construction projects. Our experienced staff can help to complete any size of educational project including small layout changes and retrofits, complete renovations of an existing school, new construction of schools or additions.

**Mapletown High School
Elevator Addition**



**Mapletown High School
Elevator Addition**



W&J Admissions House Renovations



**W&J Baseball Locker Room
and Facade Renovation**



Community

Assisting the local communities in their continued growth by guaranteeing a successful construction project is one of the more rewarding things we do at MacBracey. We have completed small renovation projects and complete renovation projects involving all facets of construction on multiple floors. We also have completed new construction projects of both new buildings and additions to existing buildings.



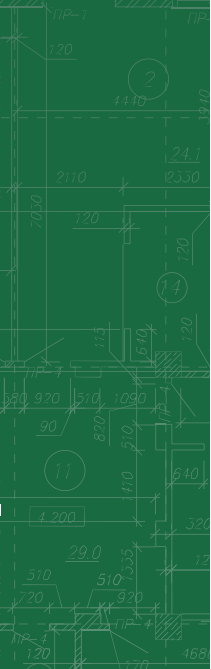
**New Construction of
Somerset Storage Building**



USC Municipal Building Renovations



New Construction of West Liberty Church



New Construction of Benwood Maintenance Facility



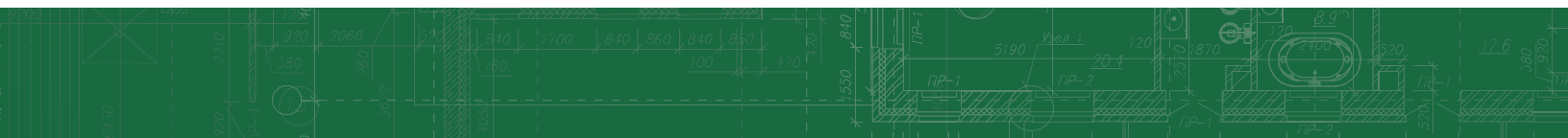
Woodside Manor Renovations of Units and Common Areas



Benwood Kitchens Renovation Project

Housing Projects

MacBracey has been involved in housing projects from its inception. We have developed ties with housing authorities, private owners, and management companies in the region that now choose MacBracey for their housing projects no matter the size. We have completed building retrofits including handicap accessibility renovations, window/door renovations, plumbing renovations, kitchen renovations, elevator renovations, and complete building renovations that were completed floor by floor.



Commercial Projects

MacBracey has completed many commercial projects throughout the region. Projects have been as extensive as complete design and construction of multiple floors of office space to renovations or repairing existing facilities. MacBracey has built very strong ties with companies in the area and have assisted these companies through expansions and repairs as they are needed.

**Buffalo Land Company
"The Knob" Storage Building**



SMS Millcraft Office Repairs



SMS Millcraft Office Repairs



**Buffalo Land Company
"The Point" Office Building**



Buffalo Land Company "The Point" Office Building

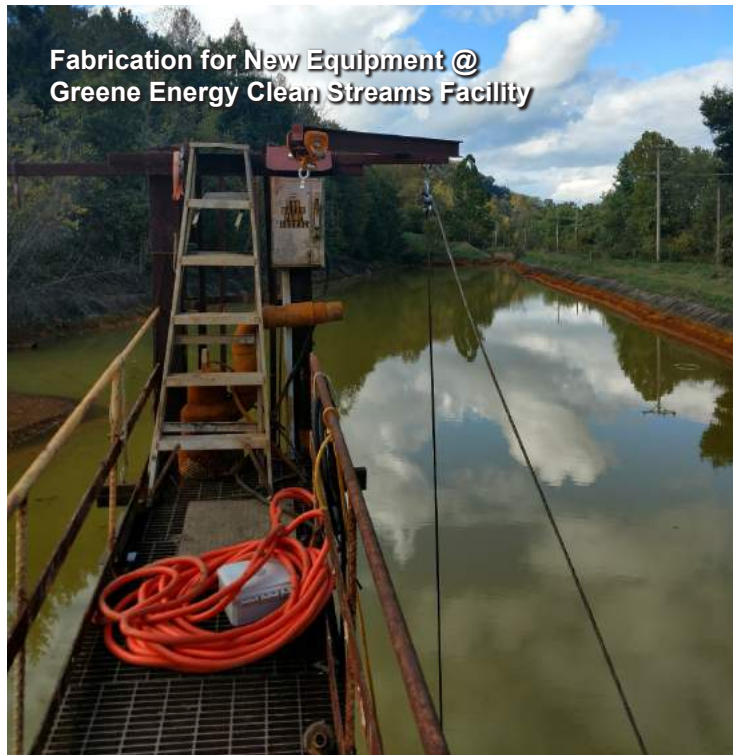


Industrial

MacBracey's staff has been involved in industrial construction in Western Pennsylvania since the late 1970's and are proud of the numerous relationships they have built. MacBracey offers a complete construction package including civil work, concrete foundations, machine setting, process piping, steel building supply and erection, mechanical construction, and any electrical needs.



Waste Treatment Corporation-
Setting Process Equipment



Fabrication for New Equipment @
Greene Energy Clean Streams Facility



Waste Treatment Maintenance Garage



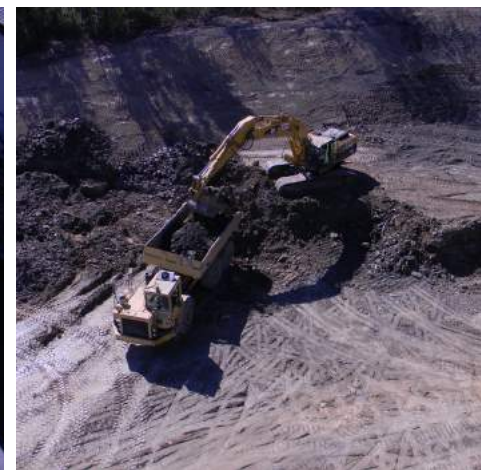
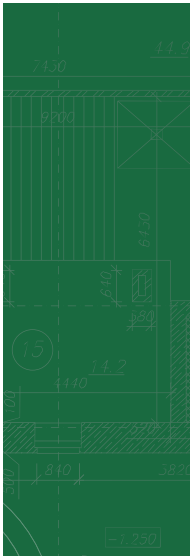
Trigon Expansion Project



Trigon Expansion Project

Design/Build Projects

MacBracey has completed multiple design/build projects in the past and we hope to increase the volume of design/build projects we are involved in annually. We feel that our design/build services offer the customer the best value as we can oversee the project from inception. This means everything throughout the design process is reviewed by experienced staff members that can make changes to guarantee the best value for the client. These changes often involve layout, material changes, and means/methods for efficient construction.





Pre-Engineered Metal Building Projects

"Building Partnerships"



MacBracey has been partnered with STAR buildings for almost three years. Already, we have completed many buildings together. MacBracey has experienced success in the pre-engineered metal building industry before STAR, but our success has increased since partnering with STAR. STAR is always trying to implement new ways to gain an advantage over their competitors. These advantages are passed on to MacBracey Corporation, which we in turn pass onto the client.

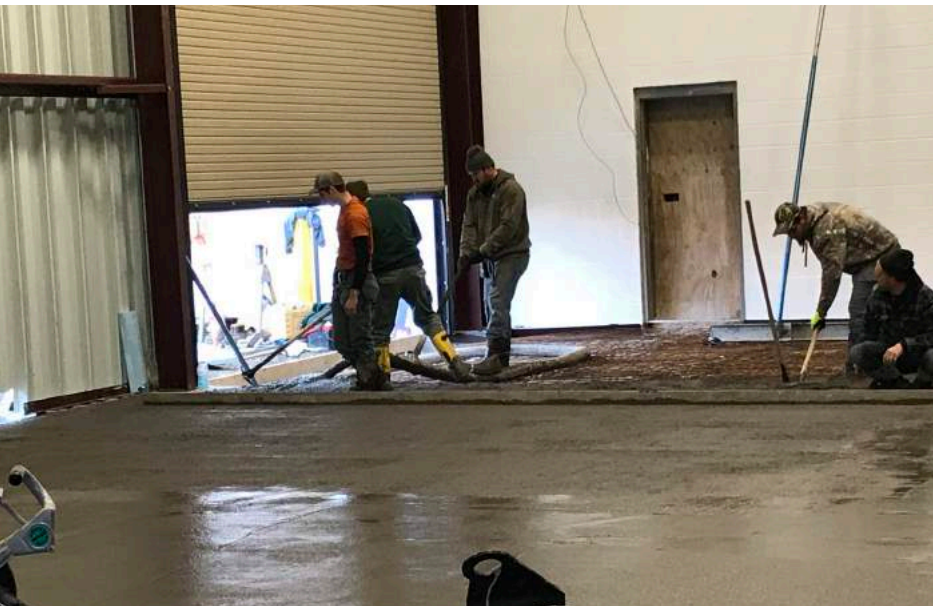
MacBracey has completed steel buildings that are used in many different industries. These include warehouses, maintenance garages, water treatment plants, compressor stations, airplane hangars, titanium forging, machining, and finishing facilities, and offices. Pre-engineered metal buildings cast a large shadow in the industry and are only growing in popularity. These building can be designed efficiently and cost effectively, so they are practical in almost all situations. These buildings are no longer just square warehouses, they can be designed to be an architectural masterpiece or anywhere in between.



Licensed in P.A. & W.V.



2155 Park Avenue
Washington, PA 15301
Office: 724-229-0119
Fax: 724-225-1180
Website: www.macbracey.com



Memberships in:

Washington County
Chamber of Commerce

Washington County
Manufacturers Association

Pittsburgh
Builder's Exchange

MacBracey is registered
with the US Small
Business Administration

MacBracey is a
certified Women's
Business Enterprise
and Woman Owned
Small Business

Here are a few clients:

Washington County Housing Authority

Waste Treatment Corporation

The Redevelopment Authority
of the County of Washington

Washington County

Washington and Jefferson College

West Liberty College

McGuffey School District

Trinity School District

Coen Energy

Bethel Park Township

Southeastern Greene School District

Nine Energy

Stelkast Inc.

Greene County Housing Authority

Benwood/McMechen Housing Authority

Skyward Aviation

Trigon Holdings, Inc.

SMS- Millcraft

Upper Saint Clair Township

Donley Brick

Buffalo Land Company

Greene Energy